

VOCO®

AN IHG HOTEL

Riyadh



voco® Riyadh - an Award-winning hotel, the perfect choice for business and comfort purposes.

King Fahad Road | Facing the Ministry of Interior
P.O. Box 13003 | Riyadh 11493 | Kingdom of Saudi Arabia
Phone +966 11 457 9999 | Fax +966 11 457 9988
vocoriyadh.events@ihg.com
vocohotels.com/Riyadh

 @vocoriyadh

 @vocoriyadh

 @vocoriyadh

Work, rest and stay

Events and Banquets

If you are looking for a spacious luxurious place that would be a perfect spot for your events and banquets, voco® Riyadh - an IHG Hotel would definitely be your right choice!

Extended over 16 venues, we have a wide variety of choices for your various events, including the 1200 m² Riyadh Grand Ballroom that can be subdivided into 3 separate halls.

We have likewise a roomy theatre style conference spot that can accommodate over 1700 attendees, as well as a banquet area hosting 1200 guests.

Over and above, and if you are still looking for a smaller meeting room, it would be just around the corner; starting at 57 square meter and can also serve as breakout rooms.

Rooms and Amenities

Embracing a wide-ranging of 438 comfy lavish rooms and suites, we are confident that your stay at voco™ would be like no other! You can choose between superior or classic rooms, executive rooms, one bedroom suites, ambassador suites, presidential suites or royal suites.

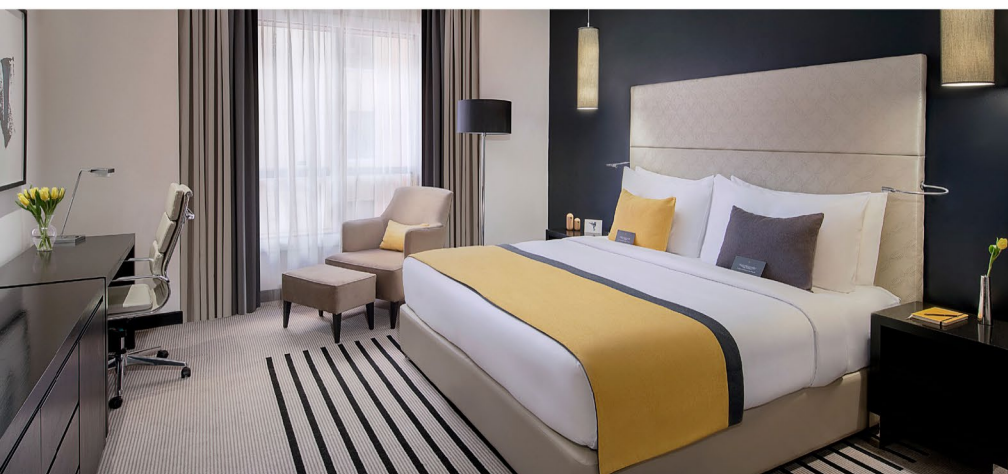
Together with a unique experience of accommodation, you can enjoy a high speed internet access and media hubs for USB, iPods and tablets.

Each suite includes a cozy bed, a living area, a dining room, and a kitchenette.

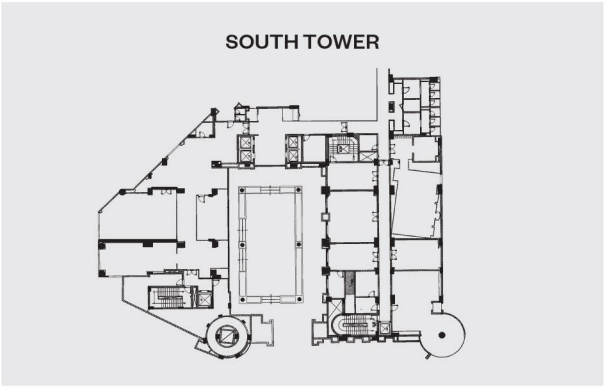
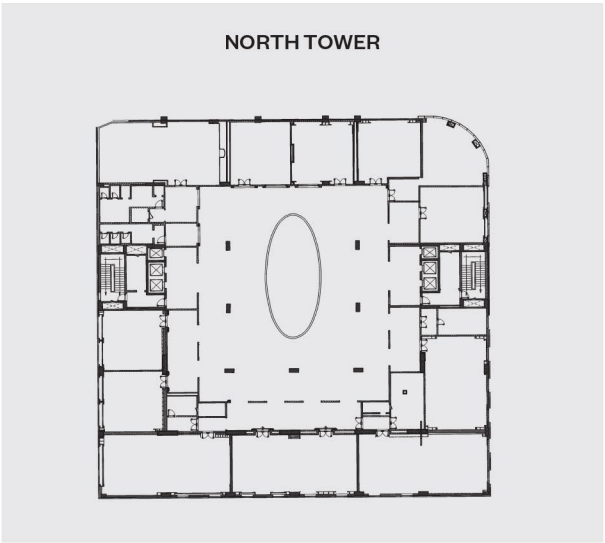
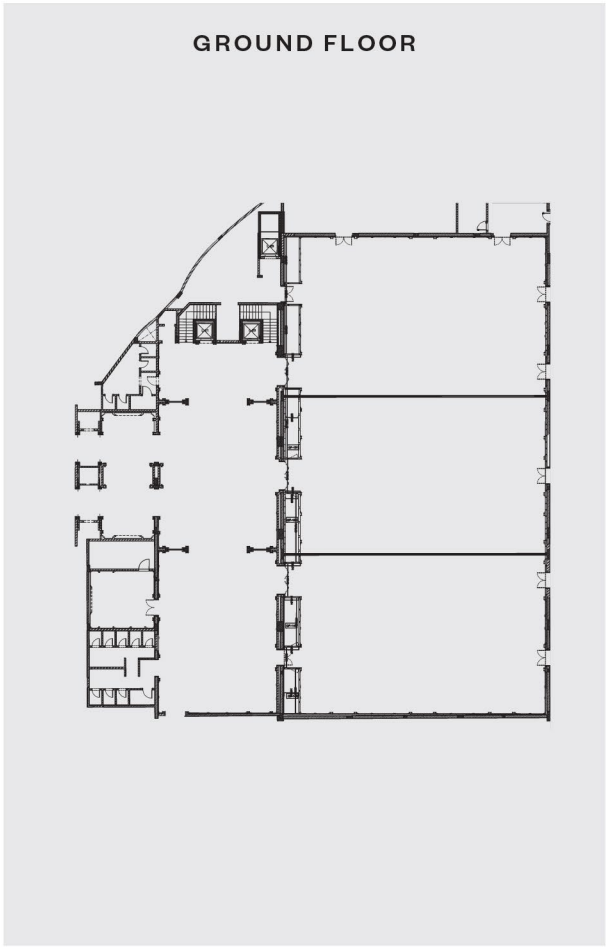
Over and beyond, our executive-suites-guests have exclusive access to the executive lounge.

Dining and Entertainment

Giving the best to our guest is the goal of our 4 exquisite cuisines at voco® Riyadh – an IHG Hotel! Thus, you can simply enjoy fresh Middle Eastern mezze at the Lebanese restaurant Naya, striking Indian spices at Anardana, a wide variety of delicious international cuisine at Horizon and genuine Italian dishes at Acacia.



Meeting Rooms Capacities



GROUND FLOOR	Dimensions L x W x H (m)	Floor space (m ²)	Round table (BQT Chair)	Classroom (BQT Chair)	U-shape (BQT Chair)	Theatre (BQT Chair)	Boardroo (BQT Chair)	Hollow square (BQT Chair)
Al Riyadh	48 x 24 x 4.9	1152	546	660	156	1225	144	180
Al Riyadh A	16 x 24 x 4.9	384	140	198	63	350	84	90
Al Riyadh B	16 x 24 x 4.9	384	140	198	63	350	84	90
Al Riyadh C	16 x 24 x 4.9	384	140	198	63	350	84	90

NORTH TOWER	Dimensions L x W x H (m)	Floor space (m ²)	Round table (BQT Chair)	Classroom (BQT Chair)	U-shape (BQT Chair)	Theatre (BQT Chair)	Boardroo (BQT Chair)	Hollow square (BQT Chair)
Qassim	12.2 x 7.7 x 2.3	93.94	42	36	30	80	30	36
Abha	17 x 7.7 x 2.3	130.9	56	72	42	120	42	40
Jeddah	16.5 x 7.8 x 2.3	128.7	49	63	36	90	36	36
Hail	16.8 x 7.7 x 2.3	129.36	56	72	42	120	42	40
Makkah	7.8 x 7.9 x 2.3	61.62	21	24	18	40	18	24
Aseer	7.8 x 7.7 x 2.3	60.06	21	24	18	40	18	24
Madinah	7.8 x 8 x 2.3	62.4	21	24	18	40	18	24
Boardroom	8 x 7.6 x 2.3	60.8	21	24	14	40	18	24
Al Baha	7.5 x 7.7 x 2.3	57.75	21	24	18	40	18	24

SOUTH TOWER	Dimensions L x W x H (m)	Floor space (m ²)	Round table (BQT Chair)	Classroom (BQT Chair)	U-shape (BQT Chair)	Theatre (BQT Chair)	Boardroo (BQT Chair)	Hollow square (BQT Chair)
Taif 1	12 x 7.8 x 2.8	93.6	60	36	30	80	30	36
Taif 2	12 x 5.4 x 2.8	64.8	21	24	18	40	18	24
Tabuk	7.5 x 5 x 2.8	37.5	20	18	22	30	28	28
Buraidah	8.2 x 7.5 x 2.3	61.5	21	24	18	40	18	24
Najran	7 x 4.3 x 2.3	30.1	10	12	15	20	12	12



EXPLORE NEARBY

King Abdullah park is located in the Malaz district in Riyadh, and it is one of the most important places for picnics in Riyadh, as the park is full of vast green spaces, it also has an area performances and celebrations, and a huge industrial lake with a dancing fountain with a height of more than 110 m.

The national museum in Riyadh is one of the most important tourist places in Saudi Arabia, as it is a cultural façade that highlights the honorable history of the kingdom.

And there are many public service facilities for the museum visitors.

The Kingdom Tower is one of the most important cultural landmarks in Riyadh, as it is one of the tallest tower in the Kingdom, with a height of 300 meters, and it consists of 99 floors. It contains a luxurious shopping center, a ballroom, a hotel, and a number of international restaurants and cafes.

Location

Overlooking the Ministry of Interior on King Fahd Road, and only 30 minutes afar from King Khaled International Airport, voco™ get your room and be at home!

